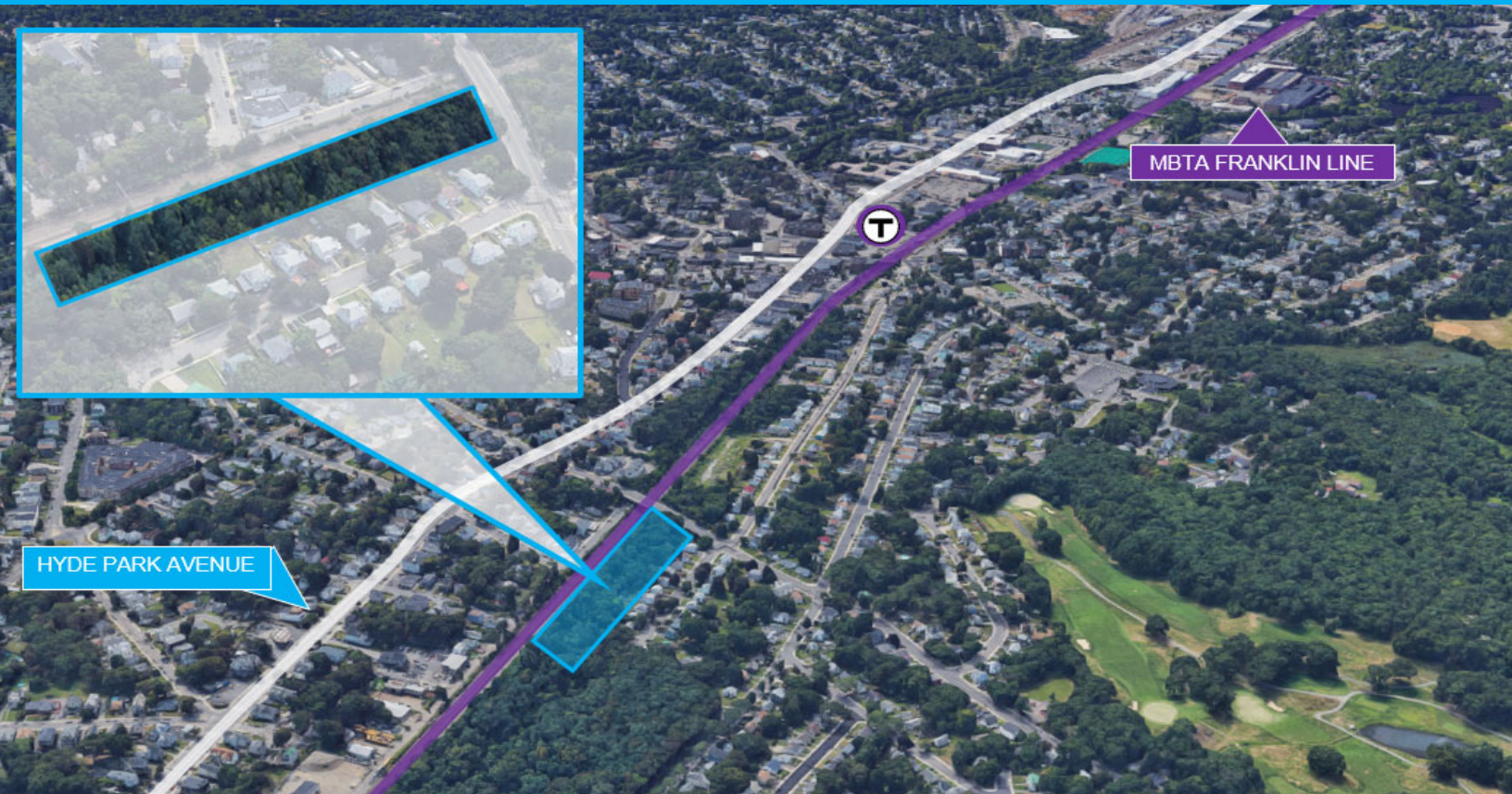


Gwinnett Street

Hyde Park | Boston | Massachusetts



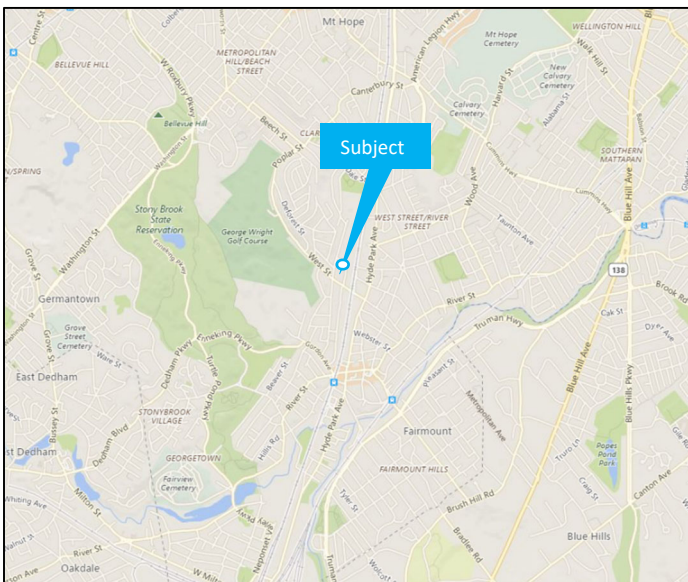
COMING SOON FOR SALE ± 1.5 ACRES VACANT LAND

The MBTA is pleased to present a development opportunity located behind Gwinnett Street and adjacent to the MBTA Franklin Commuter Rail right-of-way in Boston, MA. The parcel consists of approximately 1.5 acres of vacant land made up of mostly trees and vegetation. The Hyde Park neighborhood of Boston is an urban location with suburban characteristics. The property is located a half mile from the Hyde Park Commuter Rail station and the busy downtown area of Hyde Park.

Zoning: One-Family Residential

Hyde Park Population: 37,934

Hyde Park Median Household Income (2016): \$70,923



Greystone & Co., Inc. |
Massachusetts Realty Group
617.316.1654
www.mbtarealty.com

