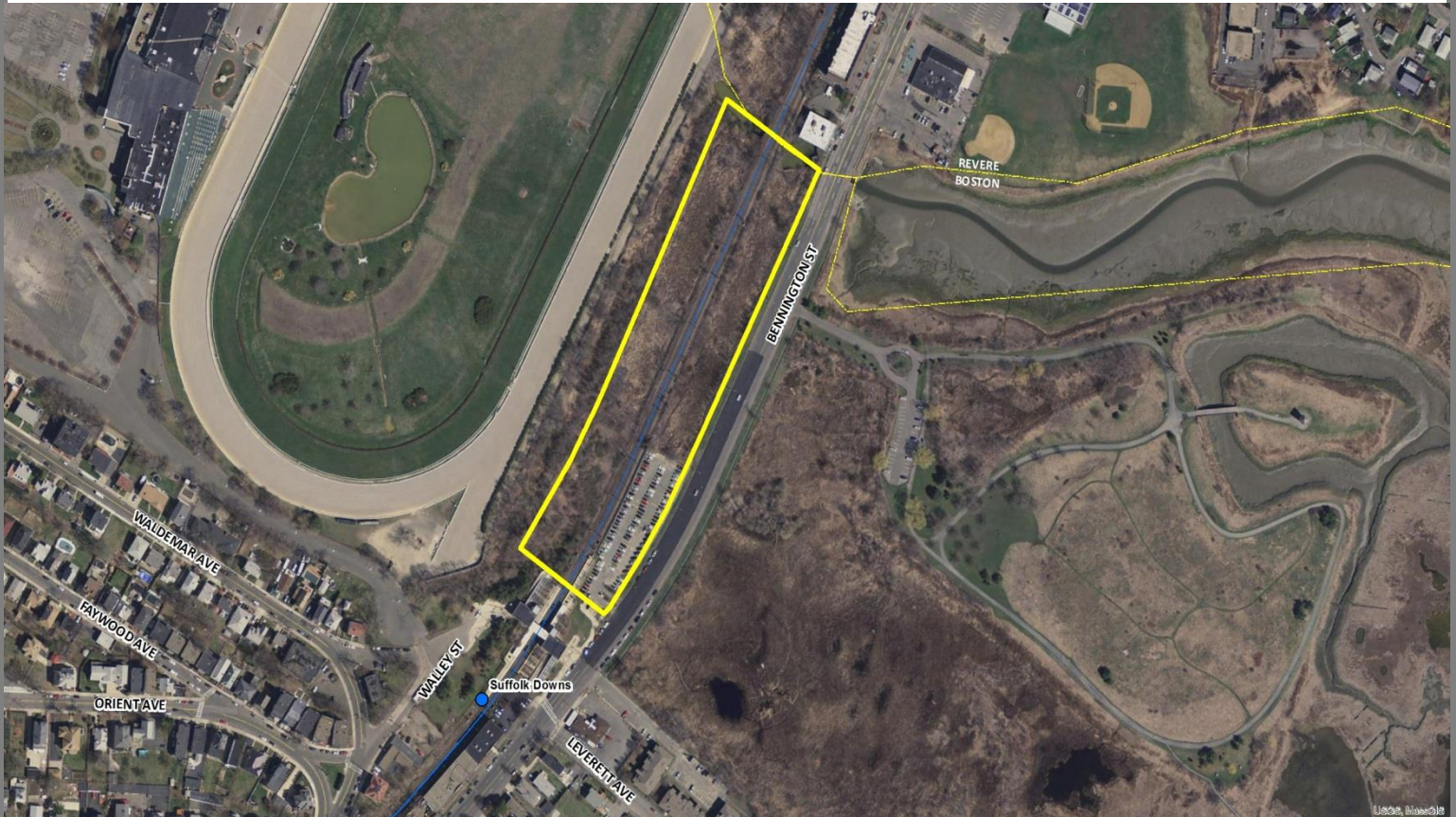




Suffolk Downs Disposition East Boston, Massachusetts



Property Overview

The MBTA will be offering the surface parking lot, air rights over a portion of the Blue Line Track, and vacant area at the Suffolk Downs Blue Line Station along Bennington Street for disposition. The property has a surface area of 305,000 square feet and an additional 44,000 square feet of air rights. The property includes a 110-space MBTA parking lot, blue line track, and undeveloped, wooded land.

Additional Information

Address: Bennington Street, East Boston, MA
ITB Release Date: TBD

