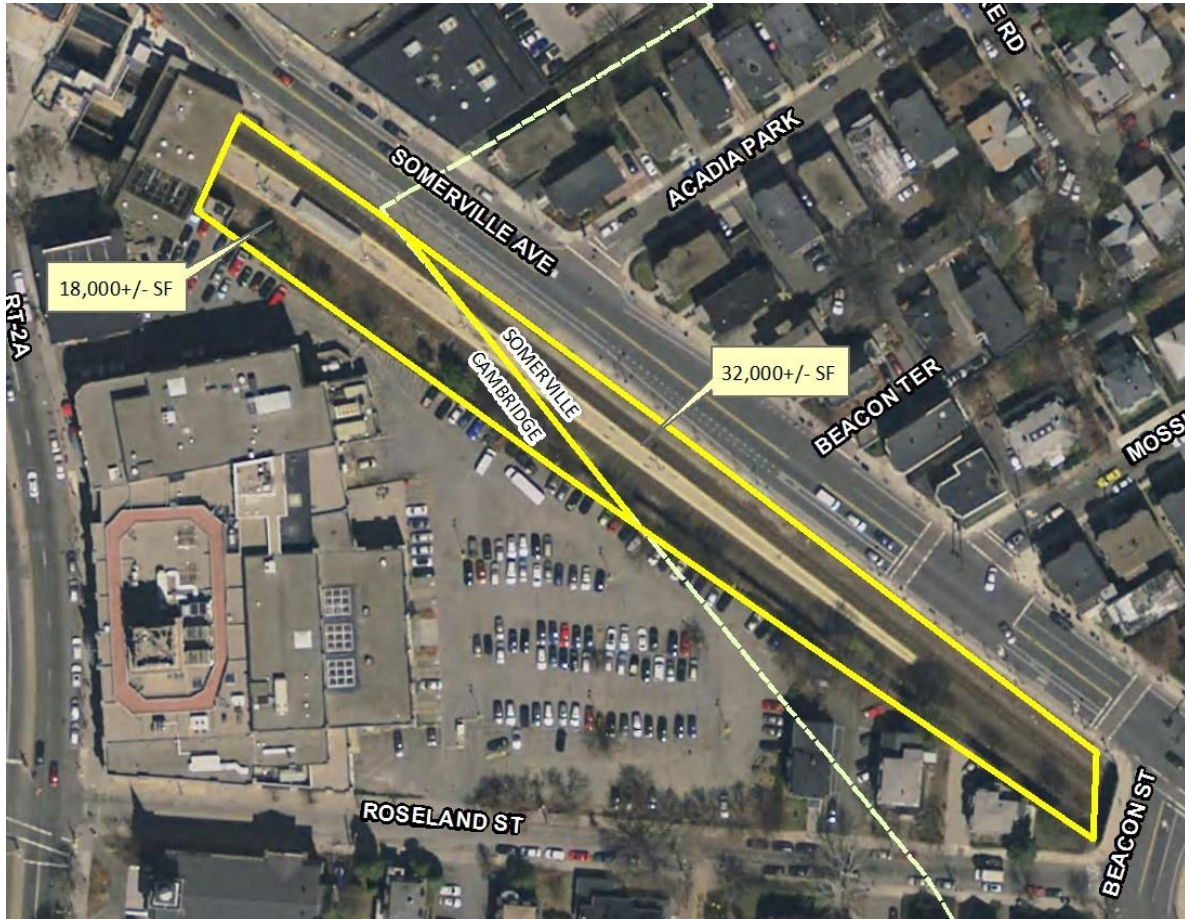


Porter Square Air Rights Cambridge & Somerville, Massachusetts



Property Overview

The MBTA intends to release an Invitation to bid for a portion of the air rights above Porter Square Station for lease and a track level appurtenant easement for sub-surface footings and above ground support columns for decking. The parcel consists of approximately 50,000 square feet of air rights above the Fitchburg Line tracks and the track level easement. Approximately 18,000 square feet of the parcel is located in Cambridge and approximately 32,000 square feet of the parcel is located in Somerville.

Additional Information

Location: Porter Square Station
Land Area: 50,000 +/- SF

