



The Commonwealth of Massachusetts

Real Estate Asset Opportunity

Chicopee Infraspace Program- Land Lease Chicopee

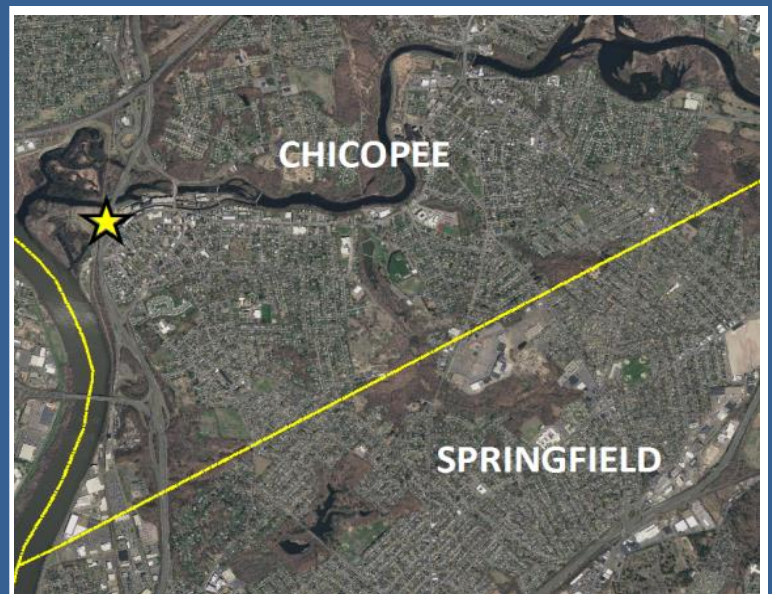


Property Overview

MassDOT intends to repurpose underutilized space under I-391 in Chicopee. The area under the highway will be repurposed to support parking for private development on adjacent land.

Additional Information

Address: area under I-391 in Chicopee
Land area: 1 acre
Anticipated release: Early 2016



Agency: MassDOT

For more information: <https://mbtarealty.com/contact.aspx>

massDOT
Massachusetts Department of Transportation